

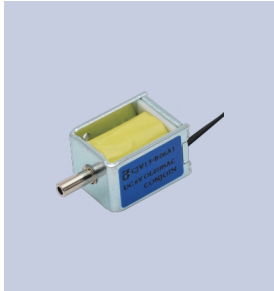


CJV13B系列series

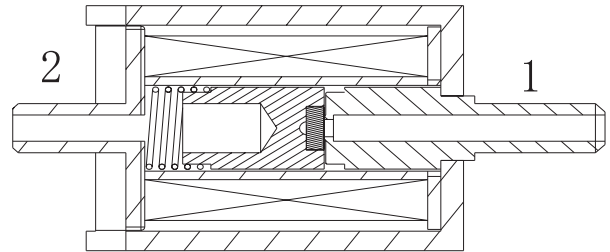
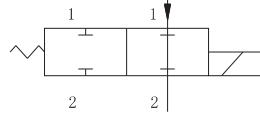


应用领域：高端醫療器械、
保健器材、
家用電器、
廚房衛浴、
美容美體等

Application: High-end medical equipment,
Health care equipment,
Household appliance,
Kitchen and bathroom,
Cosmetology and bodycare etc.



產品參數表 Parameters								
型號 Model	額定電壓 Rated voltage	額定電流 Rated current	直流阻抗 DC resistance	功率 Power consumption	排氣速度 Exhaust speed 300mmHg→ 15mmHg 500CC	氣密性 Leakage 300mmHg 500CC	最低工作電壓 Min operating voltage	工作模式 Type
CJV13-B06A1	DC 6V	150mA±10%	40Ω±10%	0.9 W	< 5 S	≤ 3 mmHg/min	< 4.5 V	常閉 Normal close
CJV13-B12A1	DC 12 V	100 mA±10%	120 Ω±10%	1.44 W	< 5 S	≤ 3 mmHg/min	< 7.5 V	常閉 Normal close
其它參數 Others								
壽命實驗 Life test			30,000次 (500CC容器, 5S/次)					
使用環境 Working environment			0~50°C, 75%RH					
可根據客戶具體要求進行定制。Customization based on specific customer requirements available.								



產品構造圖
Dimension Drawing

